



# TARUN ENTERPRISES

## CARTON MAKING MACHINERY

CORRUGATED  
BOARD &  
BOX MAKING  
MACHINES



IMPORT & EXPORT





## Automatic 3/5 Ply Corrugated Board Making Plant



For corrugators who want superior quality boards and higher production, on Line 3/5 corrugated board making plants is the only solution on line corrugated board making plants are ideal solution for achieving higher production capacity and superior board quality Reduces production cost manifold. **TARUN ENTERPRISES** offer ultra modern on line 3/5 ply paper corrugated board making plant. Assured quality with unmatched service back up.

### 5-Ply Corrugated Box Making Plant

- ◆ High speed bearing mounted Corrugation Machine with variable speed drive - 2 nos.
- ◆ Drum type heaters - 4 nos.
- ◆ Self loading reel stand - 5 nos.
- ◆ Triplex heating unit before gluing.
- ◆ On line duplex pasting unit.
- ◆ Heating, cooling and drying chamber (consist of fourteen hot plates)
- ◆ Heavy duty pull unit.
- ◆ On line creasing and slitting unit.
- ◆ Heavy duty cut off unit.

### 3-Ply Corrugated Box Making Plant

- ◆ High speed bearing mounted Corrugation Machine with variable speed drive.
- ◆ Drum type heaters - 2 nos.
- ◆ Self loading reel stand - 3 nos.
- ◆ Duplex heating unit before gluing.
- ◆ On line duplex pasting unit.
- ◆ Heating, cooling and drying chamber (consist of nine hot plates)
- ◆ Heavy duty pull unit.
- ◆ On line creasing and slitting unit.
- ◆ Heavy duty cut off unit.



Automatic Corrugated Board Making Plant



Motorised Reel Stand



Shafting Reel Stand



Hydraulic Mill Roll Stand



Double Profile (Single Facer)



Fingerless (Single Facer)



Pre Heater / Conditioner



Duplex / Triplex Pre Heater



Pasting Unit



Double Backer



Slitter Scorer



NC Cutter

Automatic 3 Ply Corrugated Board Production Line



Automatic 5 Ply Corrugated Board Production Line





## TARUN ENTERPRISES 240-245 Double Profile Single Facer Corrugation Machine

Immediate & trouble-free change over of fluting medium in just five minutes.

Motorized lifting & lowering of fluting roll assembly.

- ◆ Design speed : 60m/min economic speed: 45-50m/min.
- ◆ Effective width : 800mm-1850mm.
- ◆ Corrugated roller : 240/245/270mm, EN-19 Forging.
- ◆ Gear box driving adopts immersion oil lubricating.
- ◆ Upper roller, pressure roller. Gluing roller lift can be controlled by manually.
- ◆ Gluing part adopts auto circulation glue applying.
- ◆ Power : 1-10 HP, Head Load : 21-33 KW (Pre-Heater 1.5 KW)



## TARUN ENTERPRISES 240/245 Oblique Corrugation Machine

For high production capacity and increased efficiency as compared to other modals. Rolls are mounted on roller bearing for smooth running & longer life.



- ◆ Design speed : 60m/min economic speed: 45-50m/min.
- ◆ Effective width : 800mm-1850mm.
- ◆ Corrugated roller : 240/245/270mm, EN-19 Forging.
- ◆ Gear box driving adopts immersion oil lubricating.
- ◆ Upper roller, pressure roller. Gluing roller lift can be controlled by manually.
- ◆ Gluing part adopts auto circulation glue applying.
- ◆ Power : 5-10 HP, Head Load : 21-33 KW (Pre-Heater 1.5 KW)

## TARUN ENTERPRISES 222/224 Vertical Corrugation Machine

Single Facer Vertical Corrugation Machine, simple to operate with automatic loading with twin shaft hydraulic reel stand.

- ◆ Design speed : 30m/min economic speed: 18-20m/min.
- ◆ Effective width : 800mm-1350mm.
- ◆ Corrugated roller : 222/224/250mm, C-45 Tested.
- ◆ Upper roller, pressure roller. Gluing roller lift can be controlled manually.
- ◆ Power : 5-7 HP, Heat Load : 15-21 KW (Pre-Heater 1.5 KW)





### TARUN ENTERPRISES Self Loading Motorized Hydraulic Roll Stand with shaft

Maximum diameter Dia 1000 & 1500mm - Mechanical brakes, Screw type Taper cones for holding reels.

### TARUN ENTERPRISES Hydraulic Shaftless Mill Roll Stand

- ◆ Effective width : 1200mm-2800mm : Maximum paper roll diameter : 1800mm.
- ◆ Maximum support weight : 3 Ton (single side)
- ◆ Hydraulic control for paper mill roller up-down clamp-open and centering.



### TARUN ENTERPRISES Electric Shaftless Mill Roll Stand

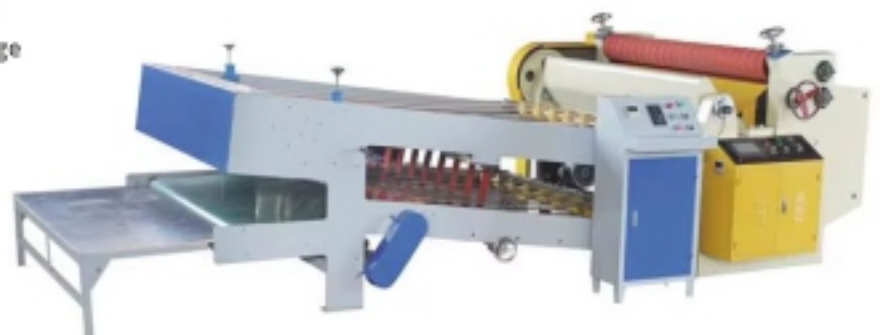
- ◆ Effective width : 1200mm-2800mm : Maximum paper roll diameter : 1400mm.
- ◆ Maximum support weight : 2 Ton (single side)



### TARUN ENTERPRISES NCSheet Cutter with Stacker

High speed reel to sheet cutting machine, paper & 2 ply cutter, can be attached to corrugation machine for direct online cutting in mm accuracy with no crossing or size variation.

- ◆ Effective width : 1200mm-200mm.
- ◆ Design Speed : 100m/mim.
- ◆ Cutting Accuracy :  $\pm 1$ mm
- ◆ Computers can store multiple sets of orders, screen display all kinds of information, can check and change order any time, modify, add, cancel easily.
- ◆ Four knife slitting, paper cutting range : cross cutting 400 mm - 2400 mm.
- ◆ Stacker is also PLC controlled, easy and convenient operations.
- ◆ Power : 3-10 HP





## TARUN ENTERPRISES Sheet Gear Model

High speed reel to sheet cutting machine, paper & 2 ply cutter, can be attached to corrugation machine for direct online cutting in mm accuracy with no crossing or size variation.

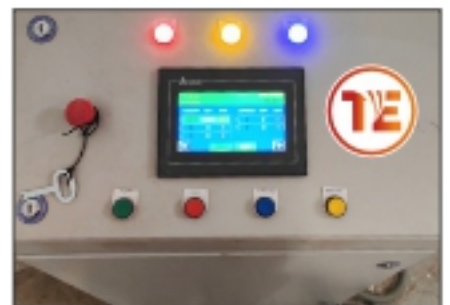
- ◆ Effective width : 900mm-1650mm.
- ◆ Design Speed : 100m/mim.
- ◆ Cutting Accuracy :  $\pm 1$ mm
- ◆ Cutting knife is of Die Steel, suitable to cut 70 GSM to 500 GSM.
- ◆ Complete set of gears to change cutting size 5" - 120"
- ◆ Complete Brake & Shaft is provided along with Reel stand.
- ◆ Power : 2-3 HP



## TARUN ENTERPRISES Computerised 2 Ply Sheet Cutter with Reel Stand

"Tarun Enterprises" Brand Servo Precision Automatic Rotary Paper Corrugated Sheet Cutting Machine is Driven By AC Servo Motor Motion Controller is Equipped for Quick and Stable Paper Cutting. The Gentle-Touch PLC Interface is Fine and Convenient. The Touch Screen Makes. The Operation Simple, it can store multiple sets of orders. 5.5" Color Digital Display, Imported Frequency Converter, Photoelectric Sensor, Japanese & Chinese Brand A.C. Servo motor and Driver.

- ◆ Effective width : 900-2200mm.
- ◆ Design speed : 150m/min.
- ◆ Cutting Accuracy :  $\pm 1$ mm
- ◆ Cutting Length Range : - 25-9999mm
- ◆ Power : 3 HP to 7 HP
- ◆ One Manual Lifting Stand
- ◆ Maximum Unwinding Diameter : - 1250mm
- ◆ Paper Slitting Unit



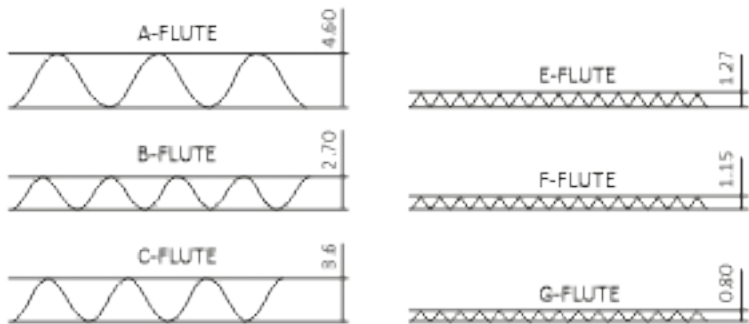
## TARUN ENTERPRISES Sheet Pasting Machine

Sheet Pasting Machine is meant for gluing the fluted side two ply board to make corrugated board of different ply.

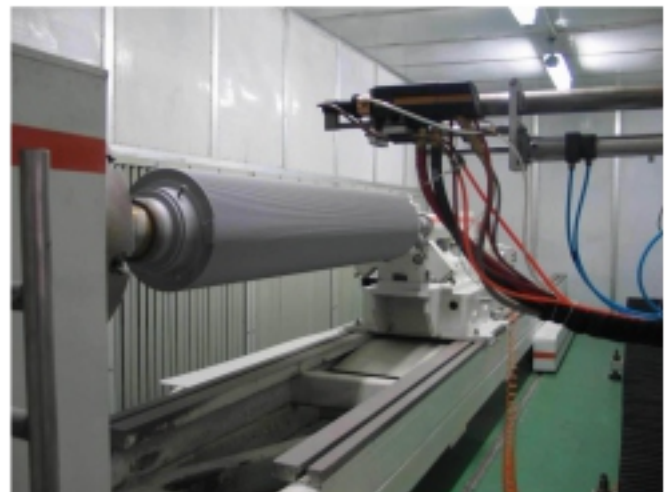
- ◆ Effective width : 1150-3050mm.
- ◆ Design speed : 60m/min.
- ◆ Power : 0.5-2 HP



## Types of Corrugating Flute Roll



Type	Corrugated Counts /250mm	Height	Theoretical Take up
A	36	4.6+0.2	1.5-1.6
C	42	3.6+0.3	1.36-1.45
B	48	2.7+0.25	1.32-1.42
E	90	1.6+0.25	1.27-1.38
F	110	0.7+0.2	1.15-1.25
G	134	0.7+0.1	0.8-0.9



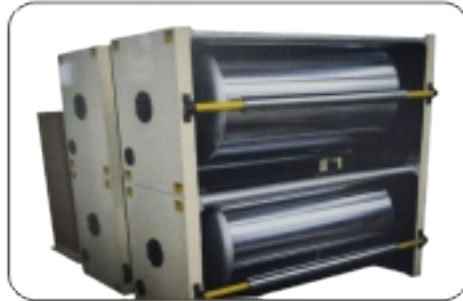


## **TARUN ENTERPRISES Automatic 3/5/7 Layer High Speed Corrugated Cardboard Production Line**

Corrugated paperboard production line is composed of Shaftless Mill Roll Stand, Fingerless Single Facer (vacuum suction type), Pre-heater, Over Bridge, Pasting Machine Double Facer (Main drive, hot and cooling part), NC Cut Off Machine, Thin Blade Slitter Scorer Machine, Stacker and Glue Making System.

Corrugated Cardboard Production Line is the high speed professional equipment for producing corrugated cardboard. It can make 3/5/7 layer board efficiently. Speed can be from 80m/min to 220m/min. Width range is 1400mm to 2200mm.

Mainly UV Flute shape, A,C,B,E,F,G, Flutes can be customized.



### TARUN ENTERPRISES 270/280 Vacuum Adsorption Single Facer (Fingerless Pneumatic)

For high production with quality, this machine adopts fingerless technology in which air suction through compressor is used instead of adaptors and because of gum rolls without grooves, gum gets applied throughout without gaps that results in better compression strength of box than traditional machines.



- ◆ Design speed : 100m/min economic speed: 60-80m/min.
- ◆ Effective width : 1000mm-2200mm.
- ◆ Corrugated roller : 270/280mm, 52CrMo/48CrMo alloy steel.
- ◆ Gear box driving adopts immersion oil lubricating.
- ◆ Upper roller, pressure roller. Gluing roller lift can be controlled pneumatically.
- ◆ Feeding paper adapts vacuum adsorption with air volume device.
- ◆ Gluing part adopts auto circulation glue applying.
- ◆ Power : 7.5 - 15 HP, Head Load : 7-23 KW

### TARUN ENTERPRISES 240/245 Vacuum Adsorption Single Facer (Fingerless Manual)

For high production with quality, this machine adopts fingerless technology. In this type of corrugation machine, air suction through compressor is used instead of adaptors and because of gum rolls without grooves, gum gets applied throughout without gaps and which results in better compression strength of box than traditional machines.

- ◆ Design speed : 60m/min economic speed: 45-50m/min.
- ◆ Effective width : 800mm-1850mm.
- ◆ Corrugated roller : 240/245/270mm, EN-19 Forging
- ◆ Gear box driving adopts immersion oil lubricating.
- ◆ Upper roller, pressure roller. Gluing roller lift can be controlled manually.
- ◆ Feeding paper adapts vacuum adsorption with air volume device.
- ◆ Gluing part adopts auto circulation glue applying.
- ◆ Power : 5-10 HP, Head Load : 21-33 KW (Pre-Heater 1.5 KW)





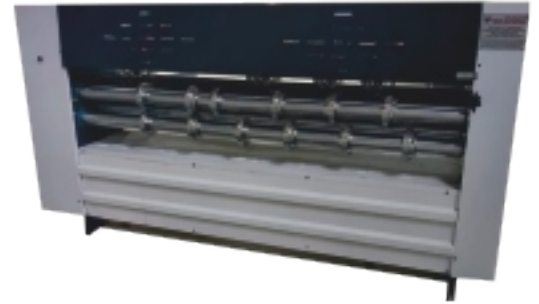
## TARUN ENTERPRISES Fully Automatic Flute Laminator

- ✦ Automatic Flute Laminating adopts back pusher and back registration system together with spring blade side lay and vacuum sucking conveying system make this series of machine fit a larger of paper, high precision while remaining the features of easy operation and maintenance.
- ✦ Servo motor technology for flute advance and hence very accurate in feeding.
- ✦ Machine has very high accuracy of registration of top and bottom sheet due to servo technology.
- ✦ Machine can be run upto 8000 imp/hr since registration is good.
- ✦ This machine glue roller adopts middle part higher design, match with anilox roller and rubber roller, the uniformity of the coating was improved greatly, Increases the intensity of lamination. Reduce the cost of the customer production.
- ✦ Balance-tested rollers, tight assembling technique, plus timing and tooth belt driving mechanic system makes the machine run at low noise with high precision.
- ✦ The machine adopts automatic glue supply and recyclable glue circulating system.
- ✦ All bottom sheet for this machine can be A,B,C,D,E,F flute corrugated sheet. It can be 3 or 5 ply board to sheet lamination or board to board lamination. The range for top paper can be 150-800 g/m<sup>2</sup> with top paper advance and alignment function.



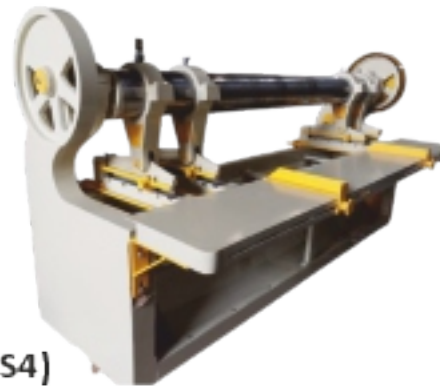
## TARUN ENTERPRISES Thin Blade Slitting and Creasing Machine

- ◆ Adopt front - scoring feeding, back double rubber roll leading paper, paperboard running steady.
- ◆ Adopt electric adjust blade distance, pneumatic lock. Improve whole machine degree of automation, easy to operate and high precision, save time and labour to adjust.
- ◆ Slitting Part : Adopt high quality tungsten carbide steel blade, sharp and long work-life, slice more titly, non-pressing and non-burr.
- ◆ Scoring Part : Adopt 5 points scoring, scoring distance in-phase adjust, easy to bend the carton sheet.
- ◆ Grinding Part : Adopt automatic and manual two kinds pneumatic grinding type, it could be grinding when working, improve work efficiency.



## TARUN ENTERPRISES Four Bar Rotary Cutting & Creasing Machine

This machine is used for creasing and cutting corrugated board simultaneously. Creasing and cutting heads are adjustable. Two side gauges are provided for accuracy in cutting and creasing of boards. The speed is 300 ft. per minute and the minimum distance between two dies is 3 inches.



## TARUN ENTERPRISES Overhung Eccentric Slotter

Three slots with one corner cutting is done simultaneously on this machine. The distance between slotting and corner cutting heads are adjustable with gear and rack mechanism provided with the machine. Two side gauges are provided for accurate feeding.

## TARUN ENTERPRISES Rotary Slotter (RS4)

- ◆ This machine adopts chain feeding type, bilateral blocking positioning, which ensures that it feeds paper accurately.
- ◆ Box height is adjusted for four knife synchronization, the length adjustment, the knife and the line pressing on top and bottom, the paper cutter and the paper pressure rod, linkage shift, order transformation.



- ◆ The phase adopts structure of planetary gear type, electric 360° adjustment, digital display.
- ◆ The machine transmission used cross slide block structure and also uses automatic spray type lubrication and circulation of oil supply; the gear adopts free key connection and removes the link clearance.

- ◆ The electrical appliances adopt internationally famous brand and the bearing adopts rolling bearing from Harbin, high speed and has stable performance.

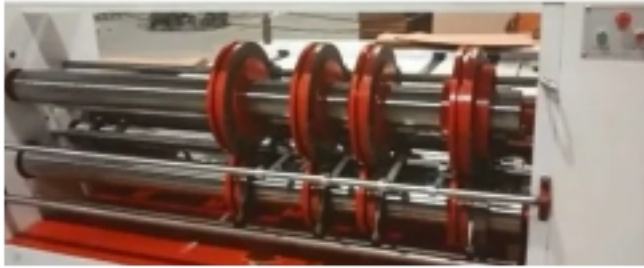
## TARUN ENTERPRISES 2 Color Flexo Printing Machine

- ◆ Suitable for Printing of Paper and Board.
- ◆ Water based ink technology for instant drying.
- ◆ Sheet can be used immediately after printing for further processing.
- ◆ Multi color sheet printer is also available.
- ◆ Effective Width : 50" x (75"/85" : 60" x (85"/95"/105")
- ◆ Power : 3 to 5 HP





## TARUN ENTERPRISES Printer Slotter Chain Feed



- ◆ Designed according to the reliable function, the operation of the machine humanization, can accomplish the setting, revision, implement, replacing and memories function in a short time, and display with a exact data.
- ◆ All drive rollers adopted high quality steel materials, hard chromium plating and surface treated by lapping finish.
- ◆ The drive gears adopt high quality alloy steel, after heat treatment and lapping finish.
- ◆ The main drive roller adopt keyless connect, decrease the connection gap, guarantee the printing precision.
- ◆ Lubricate oil automatic balance device, keep the oil level equal in each unit.
- ◆ Use sun feeder to feed.
- ◆ Customer can chose steel anilox roller or ceramic roller.
- ◆ Pneumatic locking, motor-driven apart: Electric phase adjustment, Photoelectric counting.
- ◆ This machine can finish printing, slotting, slotting, creasing at the same time also can option for hole/handle punching device.

## TARUN ENTERPRISES Lead Edge Printer Slotter with Rotary Die



- ◆ Control on the main console and each unit console with display adjustment system, store repeated order, easy for operation.
- ◆ Motorized printing hung type plate mounting, auto reset, quick change.
- ◆ Each unit is equipped with Emergency Stop switch to ensure safe operation.
- ◆ Motorized gap adjustment device for easy operation.
- ◆ This machine is out CE accordance with standard, it's standardized, generalization, humanization, Man - machine integrated, according to the manufacture of mould directly in touch, set, amendment, execution, replacing, memory it's a economic machinery.
- ◆ Double system of touch screen and electric button control, keep the function of intelligence zero returning, memory reset and automatic order formation : can choose remote service system.
- ◆ Screen PLC transformer, servo motor use IEMENS, Bosch, Yashawa.
- ◆ Transmission gears are made of high - quality alloy steel 20CrMnTi, the Rockwell hardness of the gears can get to HRC58-62.5, All roller and axle are conducted in a cutting machine, ensure thickness accordant steady when high speed work : To deal with the stress quality, by grinding the surface processed on the protection when machining.
- ◆ Can choose chambered blade system, IR drying, UV varnish.

**TARUN ENTERPRISES Fully Automatic Die Cutting with or without Stripping**



**TARUN ENTERPRISES Platen Die Punching Machine**

The Platen is one of the most popular creations, designed for Die Cutting, Scoring & Creasing of various articles like Duplex Paper, Cardboard, Corrugated Board. The Platen is patronized for more than one reason. It is compact in size, and hence, requires minimum floor space.

- ✦ Electro - Magnetic Clutch / Brake Unit
- ✦ Single Dwell Facility
- ✦ Wrap Around Safety Device
- ✦ Photo Sensor Brake
- ✦ Automatic Sheet - Counter
- ✦ Two Normal Chases, Standard M.S. Impression Plates
- ✦ Centralised Lubrication (Automatic / Manual)
- ✦ A Complete Set of Service - Tools
- ✦ Bronze Bush
- ✦ Double Helical Gear



Platen Size	25"x35"	28"x40"	32"x43"	36"x46"	40"x56"	42"x58" (Extended)	44"x58" (Extended)	46"x60" (Extended)	46"x66"	40"x70"	56"x76"	60"x90"
Power Load	5 HP	5 HP	5 HP	7.5 HP	7.5 HP	7.5 HP	7.5 HP	7.5 HP	10 HP	10 HP	15 HP	20 HP
No. Impressions	1800	1800	1700	1500	1200	1200	1200	1200	1000	900	800	600

**TARUN ENTERPRISES Hot Foil Attachment**

Built in digital display, PLC card, twin motors for twin foil stamping at the same time.



Size	16" x 24"	20" x 30"
Recommended for Platen	25" x 36"	28" x 40"
Heater Load	6 KW	7.5 KW





## TARUN ENTERPRISES Fully Automatic Folder Gluer for Lock Bottom Cartons



### Feeder

- ◆ Vibrating motor with ARM.
- ◆ Vacuum belt system in feeder.
- ◆ Separate Motor & VFD : The feeding unit with variable drive is designed to allow appropriate space between the cartons.

### Lock Bottom Unit

- ◆ For folding of all lock flaps this unit is designed in 3 track system, so that the cartons remains under pressure of 2 track at the time of folding of lock flap, this prevents shifting or non alignment of cartons, saves wastage and increases speed.
- ◆ Self adjustable track for duplex and tri ply cartons.

### Transfer Section

- ◆ It allows the carton to be transferred to pressure unit in regular, constant flow at any production speed.
- ◆ Ejection for quality assurance system.

### Pre-Folding Unit

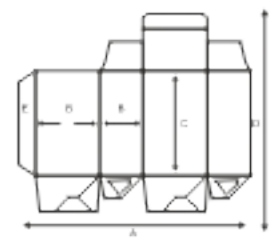
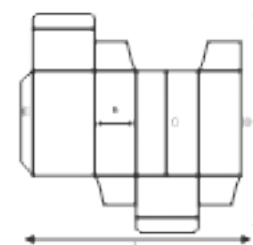
- ◆ For smooth opening of the carton at the time of filling on automatic machine the first and third crease can be pre-folder at 180 degree and 135 degree respectively, the unit is designed to prevent scratches on the carton.
- ◆ Self adjustable track for duplex and tri ply cartons.

### Final Folding unit with speed variator

- ◆ High speed precision design helps in accurate folding of second and fourth crease after gluing.
- ◆ The speed variator device in final folding unit helps in varieing the speed of side belts as per the requirement of carton dimension to prevent wastage and miss registration of carton at high speed.

### Pressure Delivery

- ◆ Pneumatic operated pressure system
- ◆ 4.0 mtr. feet length pressing station.
- ◆ Separate motor for pressing station. The independent geared motor helps in increasing or decreasing the speed of unit. So that the different size of cartons comes between the pressure belts smoothly.



Models	Power Required	Dimension	Max. Speed
T.E. 65	10HP+3HP+1HP	1.2 mtr x 8.5	300 mtr/m
T.E. 80	12HP+3HP+1HP	1.5 mtr x 9.0	300 mtr/m
T.E. 100	15HP+3HP+1HP	1.8 mtr x 9.0	300 mtr/m

Models	A. mm	A. mm	B. mm	B. mm	C. mm	D. mm	C. mm
TE. 65	88 mm	650 mm	15 mm	250 mm	68 mm	450 mm	18 mm
TE. 80	71 mm	680 mm	20 mm	280 mm	68 mm	550 mm	18 mm
TE. 100	74 mm	700 mm	20 mm	400 mm	72 mm	700 mm	18 mm

Models	A. mm	A. mm	B. mm	C. mm	D. mm	D. mm	E. mm
TE. 65	74 mm	650 mm	22 mm	68 mm	125 mm	680 mm	18 mm
TE. 80	76 mm	680 mm	22 mm	75 mm	150 mm	650 mm	18 mm
TE. 100	72 mm	700 mm	20 mm	75 mm	200 mm	700 mm	18 mm

## TARUN ENTERPRISES Semi-auto Folder Gluer

Semi-auto gluer compose of main form and two small conveyer.

Main form including: Form, up and down working table. Forepart feeding section, forepart proofread section, middle transportation section, middle press section, side carton delivery section, electric control system.

This machine adopts name brand import electric spare pars, Siemens electric, Omron photoelectric switch, Japan TOKY counter, Taiwan electric power supply.

Gluer head adopt special ally material, anti acid-base to keeping the gluer head for long life. Main motors adopt Taiwan shengbond motor.

Model	T.E. 2800
High of feeder	900mm
Power	4 KW
Machine Length	5300mm
Machine Weight	2T
Machine Speed	60m/min



Model	1500	1800
Voltage	3-380VAC	3-380VAC
HZ	50/60	50/60
Power	3.2kw	3.2kw
Current	6.3A	7A
Weight	1.7T	1.9T
Overall Size	2200x1900x1300mm	2200x2400x1300mm
Max. Size of Box	1500x1100mm	1800x1100mm
Min. Size of Box	200x260mm	200x260mm

## TARUN ENTERPRISES Semi Automatic Stitching Machine

- ◆ Built in Dual servo drive, touch screen operation, PLC with Air compressor, automatic counter ejector.
- ◆ Design Speed : 150 staples per minute.
- ◆ Sheet Size Min. 12" / Max. 60"
- ◆ Power : 6 HP
- ◆ Sheet Paper Height : 35"
- ◆ Good for 3 Ply to 5 Ply (Min. 3 MM to 8 MM Thickness)
- ◆ Nail Wire Specification 12x25 SWG, 14x25 SWG
- ◆ One minute quick order change.
- ◆ Easy operation, no training is necessary.
- ◆ Single, double supplement stitching are available.





Mobile : +91-6280760628  
+91-7658862628  
+91-6284798043



## **TARUN ENTERPRISES**

**IMPORT & EXPORT**

Village Kuranwala, Haripur Hindua,  
Opp. Ecko Cable, Barwala Road,  
Deba Bassi, Punjab (India)  
E-mail : [balwinderbhullar26@gmail.com](mailto:balwinderbhullar26@gmail.com)  
Website : [www.cartonmakingmachines.com](http://www.cartonmakingmachines.com)

3/5 Ply Corrugated Board & Box Making Machinery,  
Flexo Printer Slotter Die Cutting & Spare Parts  
Automatic Folder Gluer, Also Used and Refurbish  
Printing & Packaging Machines.

**IMPORTED CORRUGATED BOARD  
PLANT MACHINERY FROM  
CHINA, TAIWAN, JAPAN, GERMANY &  
INDIAN MACHINERY.**